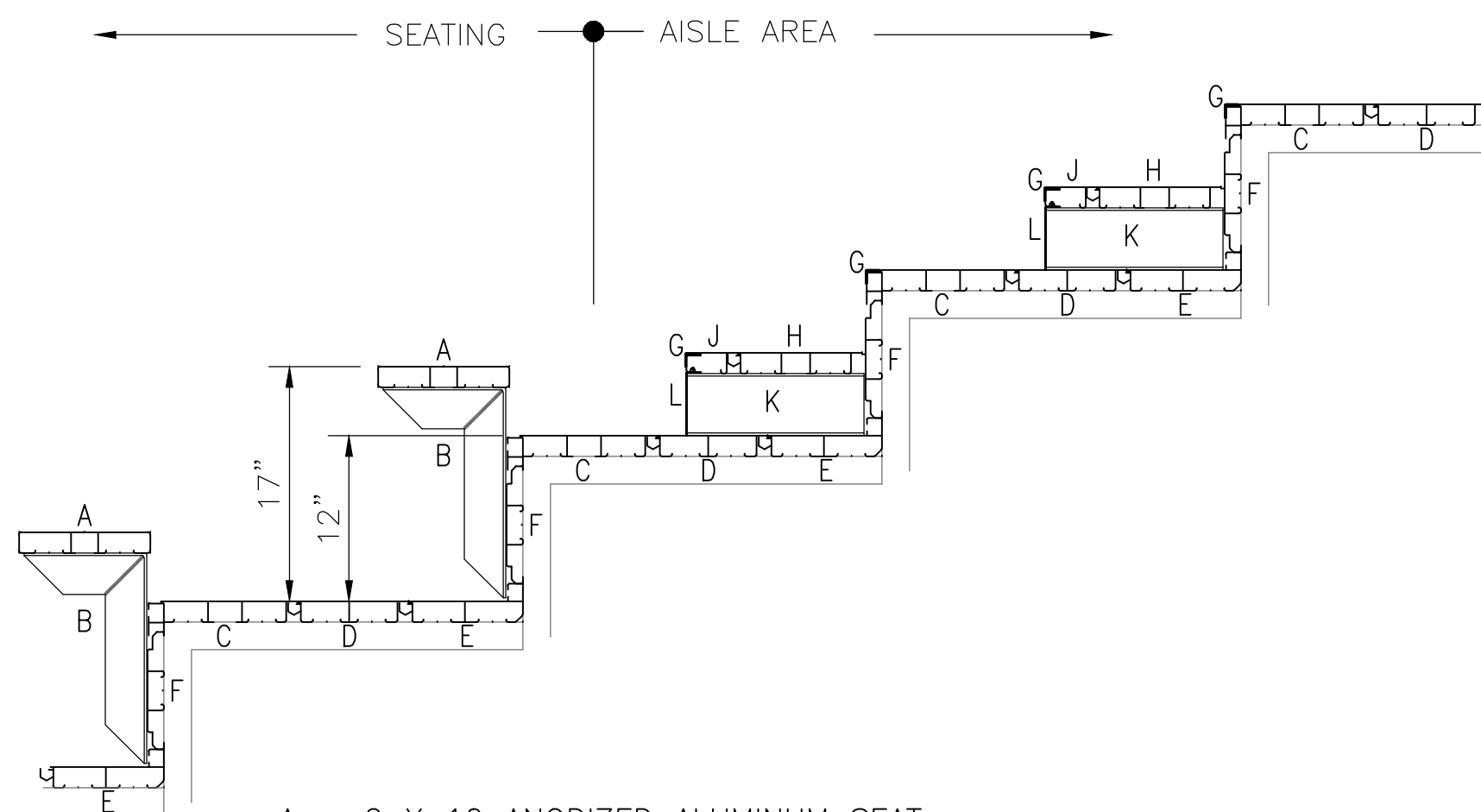


DESIGN LOADING

TREAD & SEAT AREA 100psf UNIFORM LIVE LOAD.
 SEAT (VERTICAL) 120 lbs/lf.
 SEAT (HORIZONTAL SWAY) 24lbs/lf PARALLEL AND 10lbs/lf PERPENDICULAR TO SEAT.
 HANDRAIL & GUARDRAIL 50 lbs/lf IN ANY DIRECTION.
 HANDRAIL & GUARDRAIL 200 lbs CONCENTRATED IN ANY DIRECTION.
 SNOW LOADS AS PER STATE ADOPTED CODE
 WIND LOADS AS PER STATE ADOPTED CODE
 SEISMIC LOADS AS PER STATE ADOPTED CODE

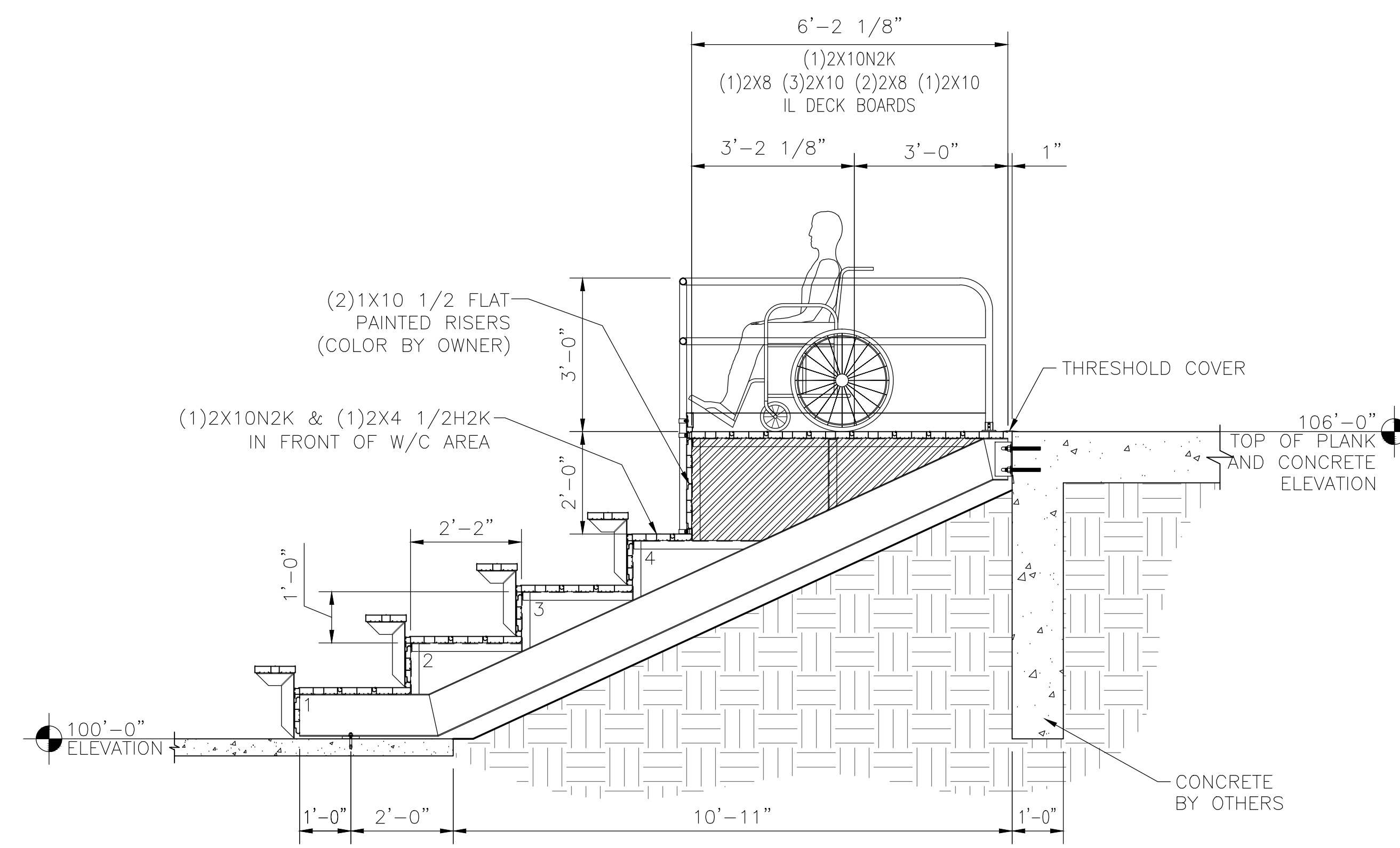
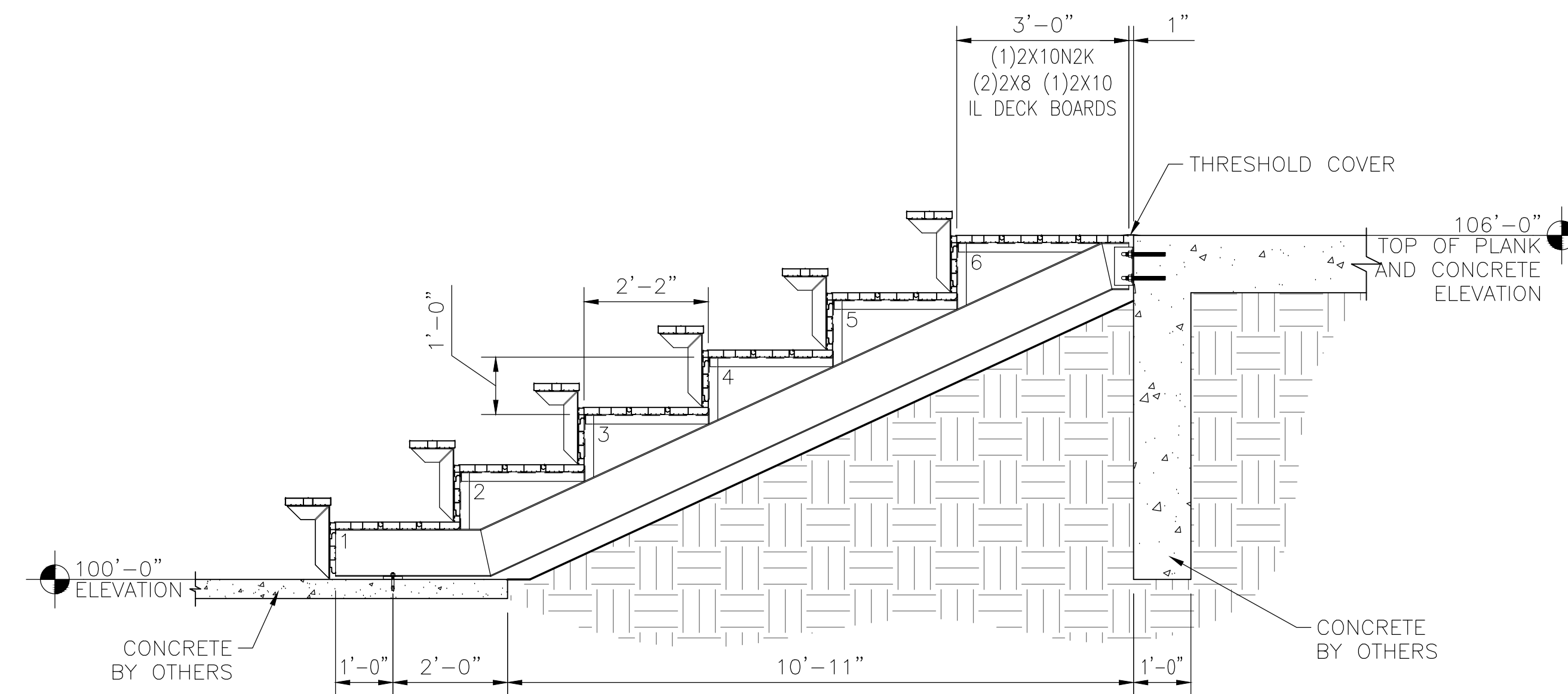
NOTES

- 1 ALL STRUCTURAL AND MISCELLANEOUS STEEL SHALL CONFORM TO THE FOLLOWING A.I.S.C. STANDARDS
 PLATE UP TO 1/2" THICK = A36
 PLATE U.N.O. = A572 GRADE 50
 ANGLE = A36/A36M GRADE 50
 WIDE FLANGE = A992 Fy=50 ksi
 CHANNEL = A36/A36M GRADE 50
 ROD = A36/A529 GRADE 50
 TUBE = A500 GRADE "B" 46 ksi
- 2 WELDS ARE ALL AROUND WITH TYPE ER70S-6 WIRE MIG.
- 3 ALL STEEL TO BE HOT DIPPED GALVANIZED TO A.S.T.M. A-123-89 ae1.
- 4 STRUCTURAL BOLTS ARE HOT DIPPED GALV. AND ARE EQUAL TO OR GREATER THAN A-307.
- 5 NO CONNECTIONS UTILIZING HIGH STRENGTH BOLTS ARE CLASSIFIED AS SLIP CRITICAL.
- 6 ANODIZED ALUMINUM RAIL IS 1 1/4" NOMINAL PIPE SIZE. (1 5/8" O.D.)
- 7 SOUTHERN BLEACHER COMPANY AS A MANUFACTURER AND INSTALLER OF GRANDSTAND SEATING IS NOT AUTHORIZED TO CERTIFY PLANS AS ADA COMPLIANT. HOWEVER, TO THE BEST OF OUR KNOWLEDGE THESE PLANS MEET OR EXCEED ADA REQUIREMENTS FOR QUANTITY OF ADA SEATING, ACCESS/EGRESS TO ADA SEATING, & DISPERSAL OF ADA SEATING.
- 8 ALL FIELD CONNECTIONS ARE NON-SLIP CRITICAL U.N.O. ALL CONNECTIONS ARE DESIGNED TO UTILIZE A307 BOLTS, IT IS ACCEPTABLE TO USE A325N BOLTS IN LIEU OF THE A307 BOLTS. THE INSTALLATION OF THESE BOLTS ARE TO BE TIGHTENED A SNUG TIGHT CONDITION AS SPECIFIED BY AISC.



- A = 2 X 10 ANODIZED ALUMINUM SEAT
- B = MILL ALUMINUM SEAT BRACKET
- C = 2 X 10 MILL ALUMINUM INTERLOCK 2000 TREAD - NOSE
- D = 2 X 8 MILL ALUMINUM INTERLOCK TREAD - DECK
- E = 2 X 8 MILL ALUMINUM INTERLOCK 2000 TREAD - HEEL
- F = 1 X 8 1/2 PAINTED ALUMINUM FLAT RISER (COLOR BY OWNER)
- G = 1 X 1 PAINTED ALUMINUM CONTRASTING NOSING (BLACK)
- H = 2 X 9 MILL ALUM. INTERLOCK HALFSTEP - DECK
- J = 2 X 4 MILL ALUM. INTERLOCK HALFSTEP - NOSE W/RISER
- K = 4 1/2" MILL ALUMINUM HALFSTEP BRACKET
- L = 4 1/2" ANODIZED ALUMINUM INTERLOCK STEP RISER

PLANK ARRANGEMENT
 NOT TO SCALE 12" X 26"



NOT FOR CONSTRUCTION

DETAIL NUMBER 110
 SHEET SHOWN ON SHEET CUT FROM

PO Box One, Graham, Texas 76450
 801 Fifth Street
 Phone: 940/549-0733 Fax: 940/549-1365
 ESTABLISHED 1946

Southern
 BLEACHER COMPANY
 GRANDSTANDS • BLEACHERS • STADIUMS

SECTION VIEWS
 12" RISE X 26" TREAD/6 ROWS/10'-0" REAR DECK

OSKALOOSA HIGH SCHOOL
 OSKALOOSA SOFTBALL BLEACHERS
 OSKALOOSA, IOWA

REV	DATE	DESCRIPTION
1	1/11/17	CF EM/LL

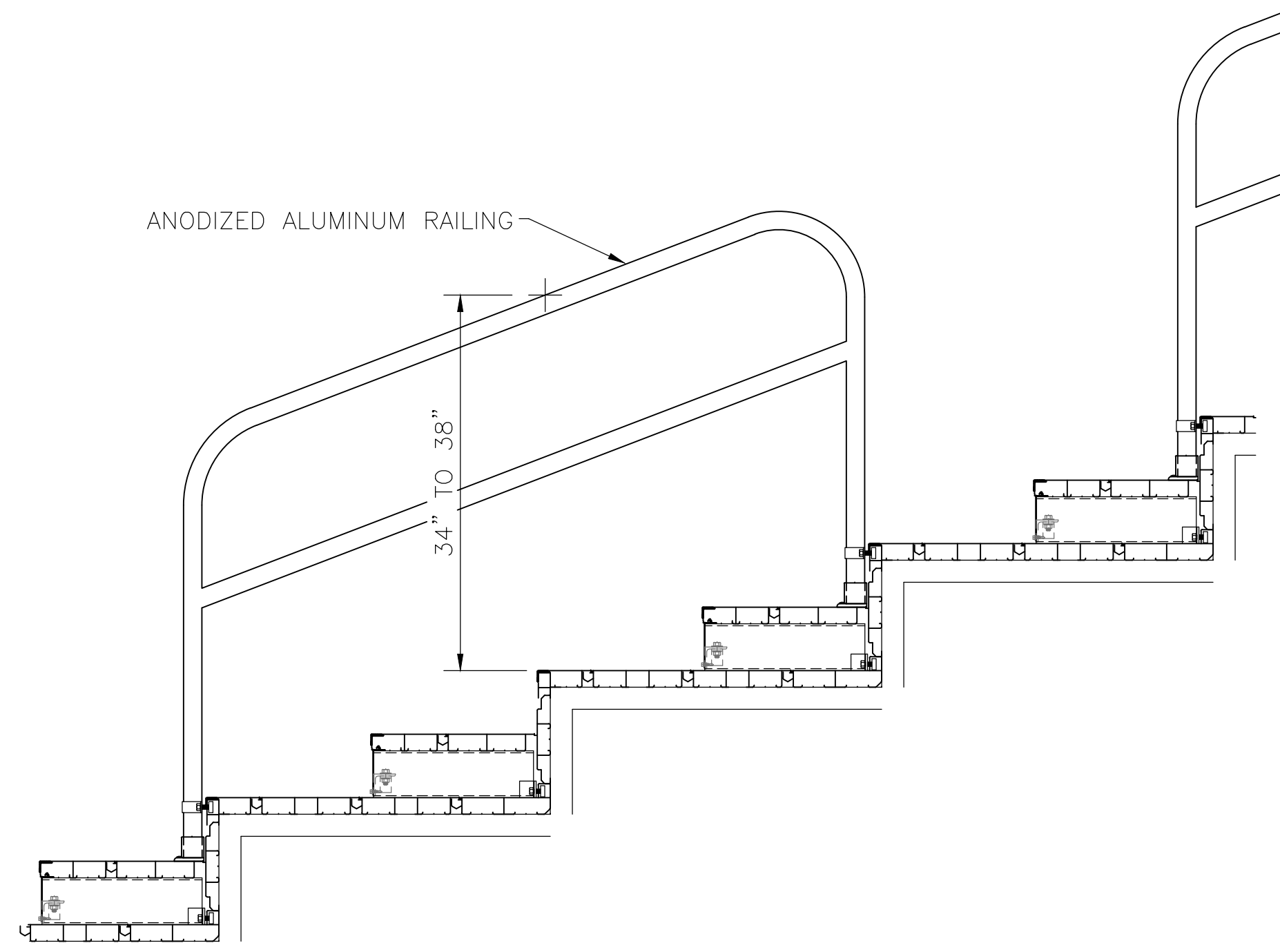
JOB NUMBER
17sd009

SHEET
1 OF **3**

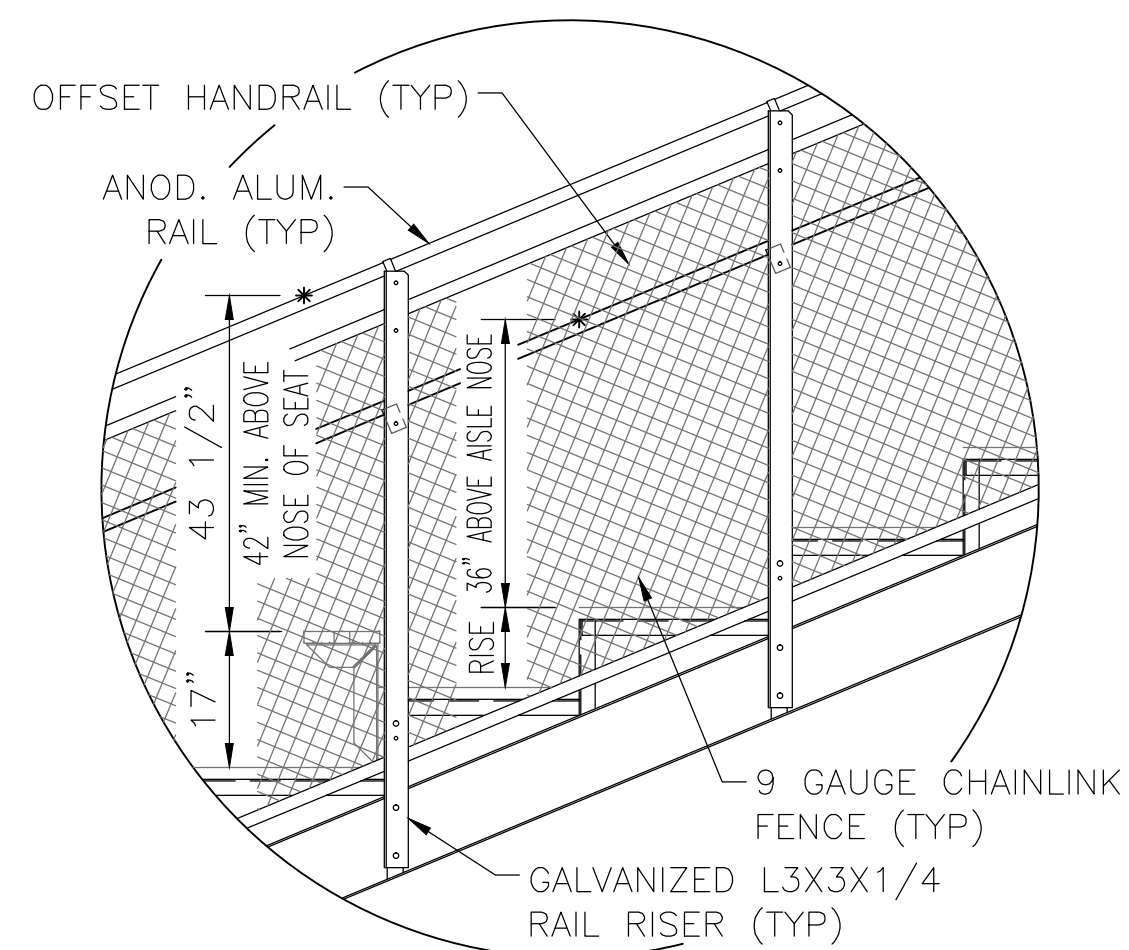
REVISION
 CF/PL/12/17

22" X 34" (11x17 = 1/2 indicated scale)

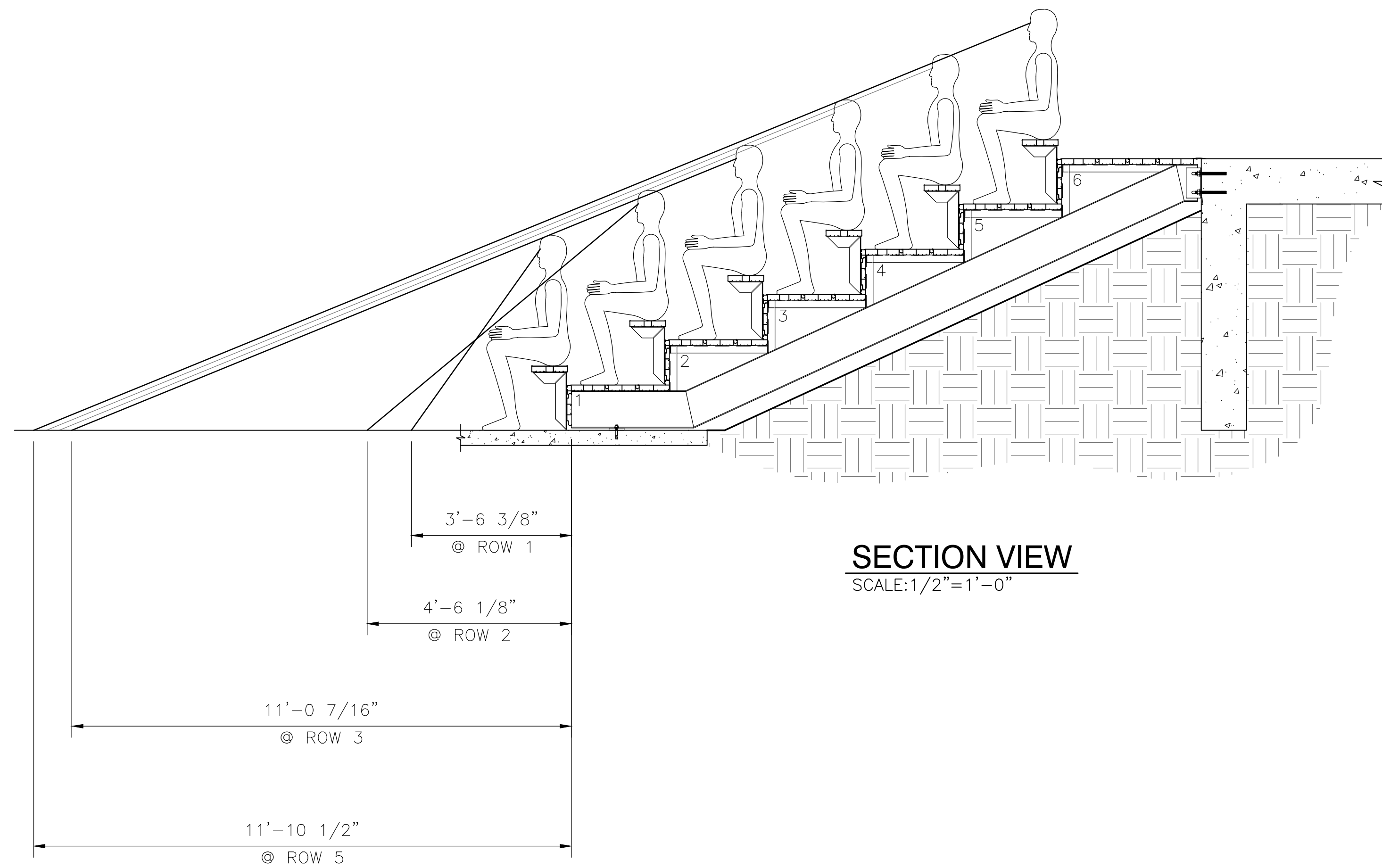




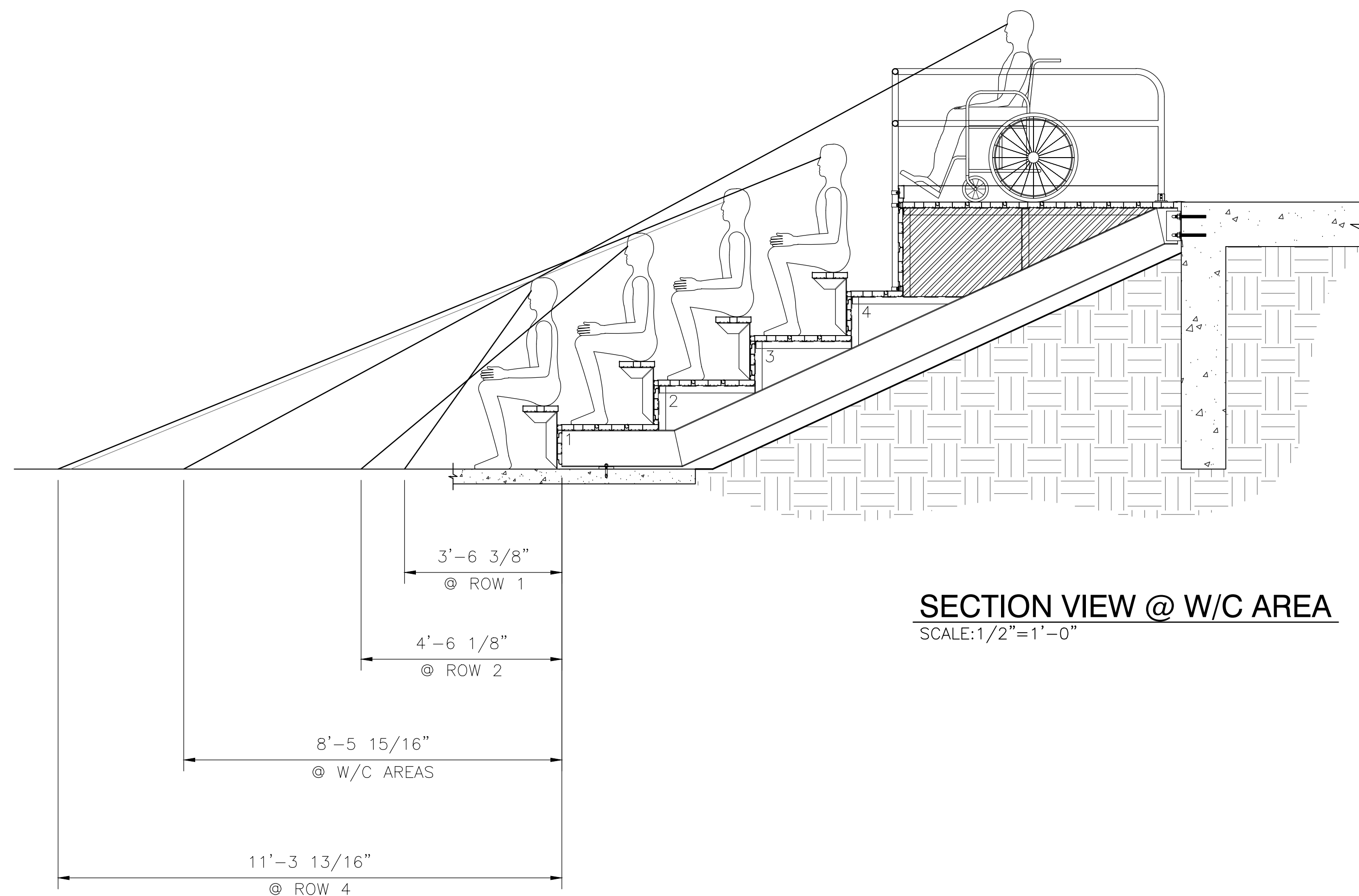
MID-AISLE INSTALLATION DETAIL
NOT TO SCALE



SIDE RAILING @ END AISLE
SCALE: 1/2" = 1'-0"



SECTION VIEW
SCALE: 1/2" = 1'-0"



SECTION VIEW @ W/C AREA
SCALE: 1/2" = 1'-0"

NOT FOR CONSTRUCTION
 DETAIL NUMBER 17sd009 SHEET SHOWN ON 310 SHEET CUT FROM
 THIS DRAWING AND ALL INFORMATION THEREON IS THE PROPERTY OF THE SOUTHERN BLEACHER COMPANY AND IS CONFIDENTIAL AND MUST NOT BE MADE PUBLIC OR COPIED. THIS DRAWING IS LOANED SUBJECT TO RETURN UPON DEMAND AND IS NOT TO BE USED DIRECTLY OR INDIRECTLY IN ANY WAY DETRIMENTAL TO OUR INTERESTS.
 Southern BLEACHER COMPANY
 PO Box One, Graham, Texas 76450
 801 Fifth Street
 Phone: 940/549-0733 Fax: 940/549-1365
 ESTABLISHED 1946
 GRANDSTANDS • BLEACHERS • STADIUMS

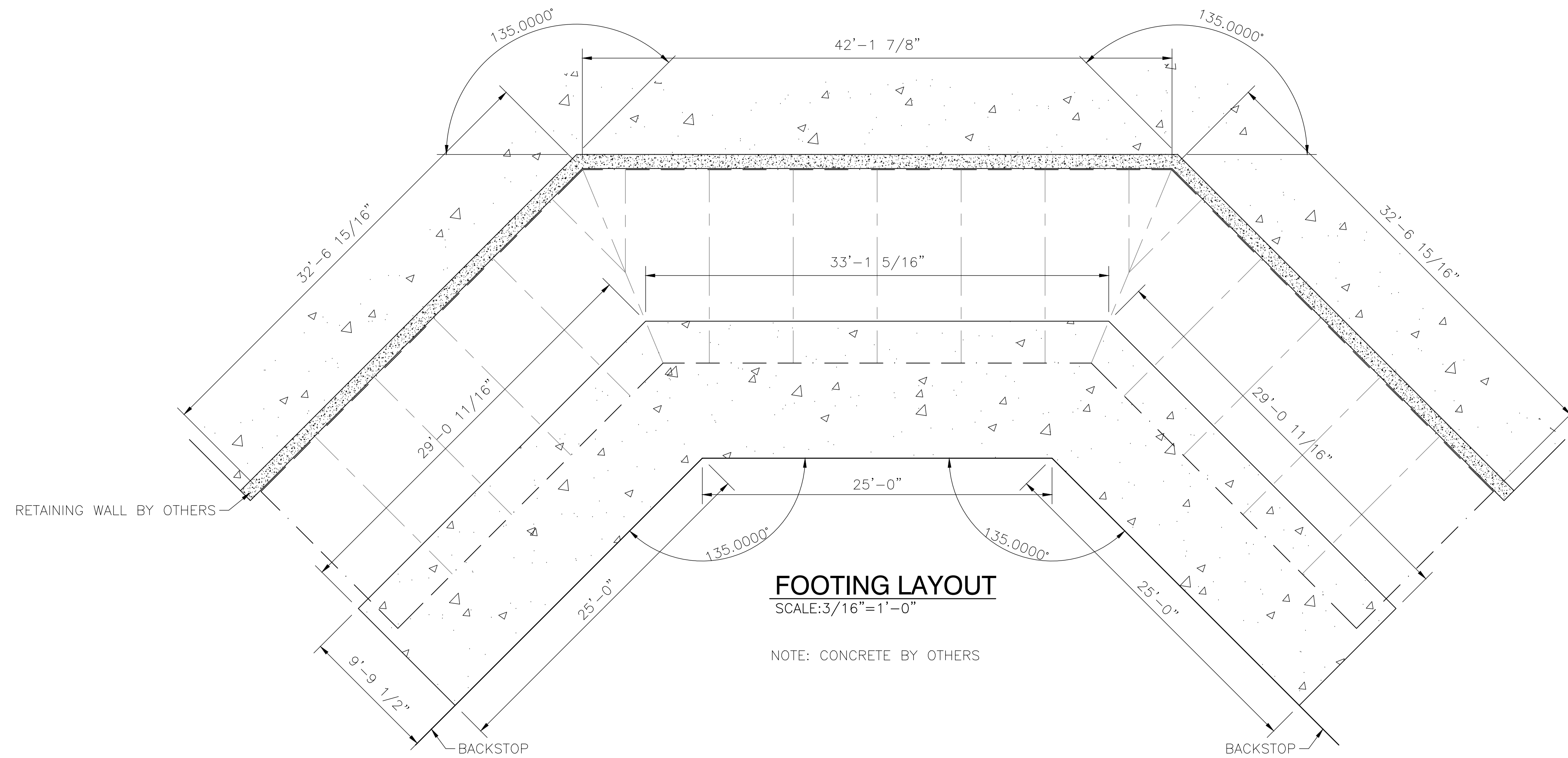
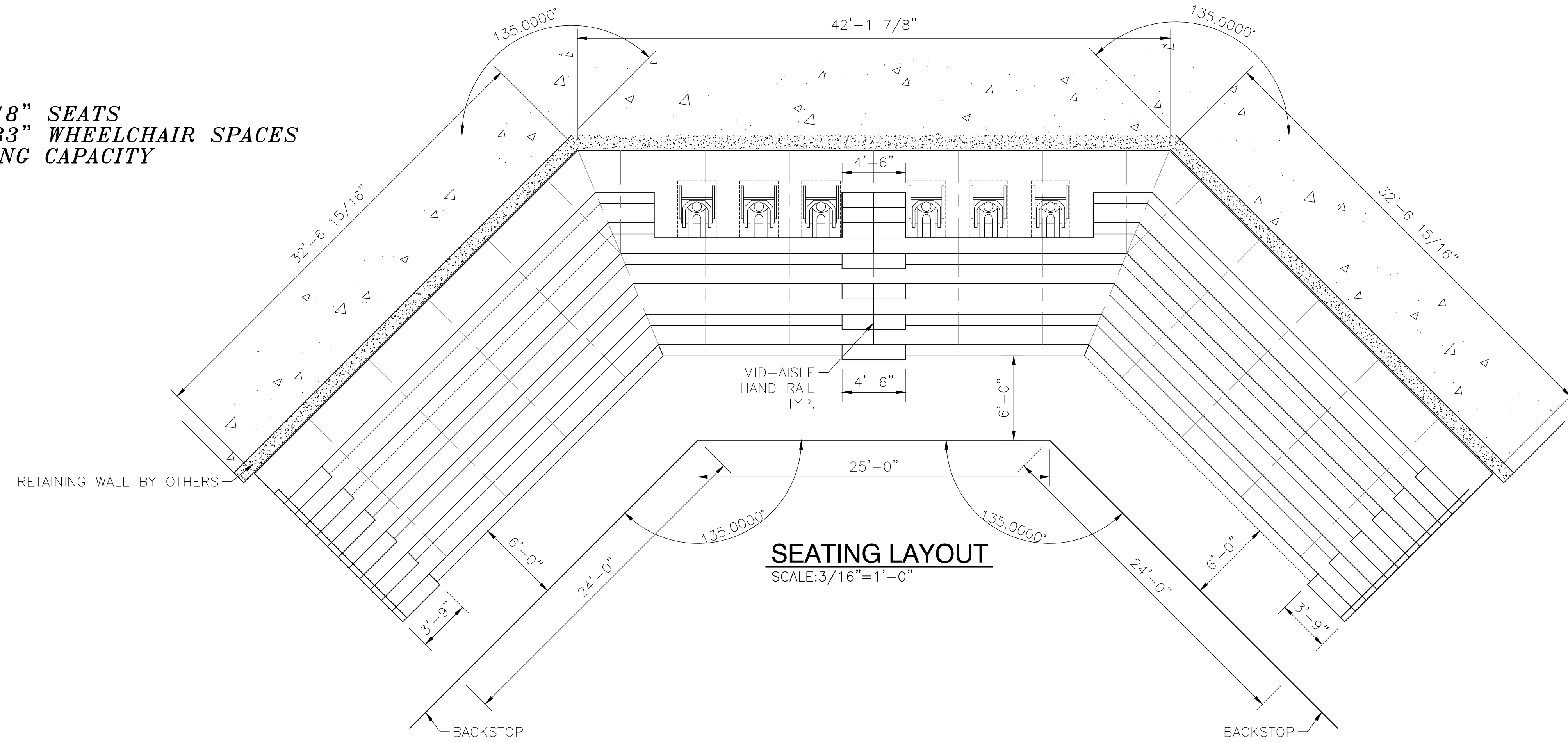
SIGHT LINES
 12" RISE X 26" TREAD/6 ROWS/10'-0" REAR DECK
 OSKALOOSA HIGH SCHOOL
 OSKALOOSA SOFTBALL BLEACHERS
 OSKALOOSA, IOWA

REV	BY	DATE	DESCRIPTION
1	CF	1/11/17	CF EM/LL
DATE			
JOB NUMBER			
17sd009			
SHEET		OF	
2		3	

22" X 34" (11x17 = 1/2 indicated scale)



272 TOTAL NET 18" SEATS
 6 TOTAL NET 33" WHEELCHAIR SPACES
 278 TOTAL SEATING CAPACITY



1-11
 3/16
 DETAIL NUMBER
 SHEET SHOWN ON
 SHEET CUT FROM

NOT FOR CONSTRUCTION

THIS DRAWING AND ALL INFORMATION THEREON IS THE PROPERTY OF THE SOUTHERN BLEACHER COMPANY AND IS CONFIDENTIAL AND MUST NOT BE MADE PUBLIC OR COPIED. THIS DRAWING IS LOANED SUBJECT TO RETURN UPON DEMAND AND IS NOT TO BE USED DIRECTLY OR INDIRECTLY IN ANY WAY DETRIMENTAL TO OUR INTERESTS.

PO Box One, Graham, Texas 76450
 801 Fifth Street,
 Phone: 940/549-0733 Fax: 940/549-1365
 ESTABLISHED 1946



PLAN VIEWS
 MITERED X 26" TREAD/6 ROWS/10'-0" REAR DECK

OSKALOOSA HIGH SCHOOL
 OSKALOOSA SOFTBALL BLEACHERS
 OSKALOOSA, IOWA

REV	BY	DATE	DESCRIPTION
1	CF	1/11/17	CF EM/LL
2	CF	1/12/17	REDDRAW

JOB NUMBER
17sd009

SHEET
3

OF
3

22" X 34" (11x17 = 1/2 indicated scale)

